

Microsoft Outlook email account Configuration guide (POP)

Tutorial

LINKEO

Microsoft Outlook email account Configuration guide (POP)

Setting up a Microsoft Outlook email account Manual configuration guide for a Microsoft Outlook 10/13 email account (POP)

This guide will allow you to configure your email address on Microsoft Outlook.

The Linkeo business mail offer allows you to store 3GB of emails and to send or receive emails of up to 18MB.

This guide also applies to all Microsoft Outlook versions, the only difference being the location of the account settings.

Our Customer Service is available on **1300 546 536** or by email at service@linkeo.com.au if you encounter any difficulties.

Microsoft Outlook email account Configuration guide (POP)

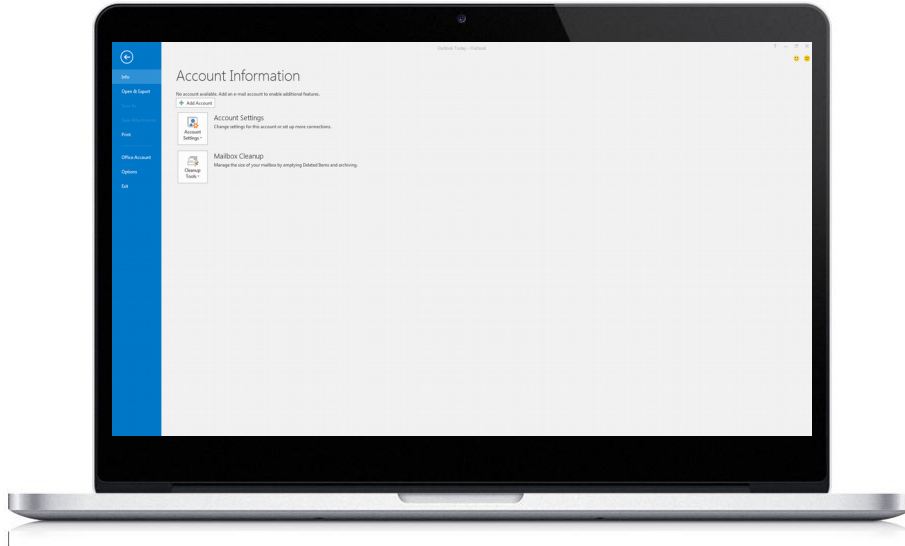


Step 1 Avoid Guided start-up

If this is the first time you start Microsoft Outlook, you will be directed to this screen.

Click « **Cancel** »

Microsoft Outlook email account Configuration guide (POP)

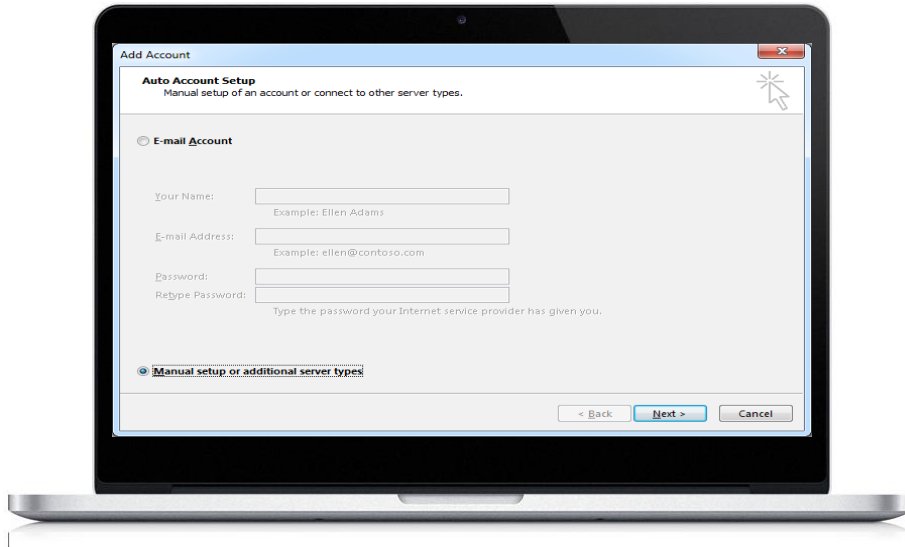


Step 2 Manual start

Click on the «Info» tab

Click « **Add an account** »

Microsoft Outlook email account Configuration guide (POP)

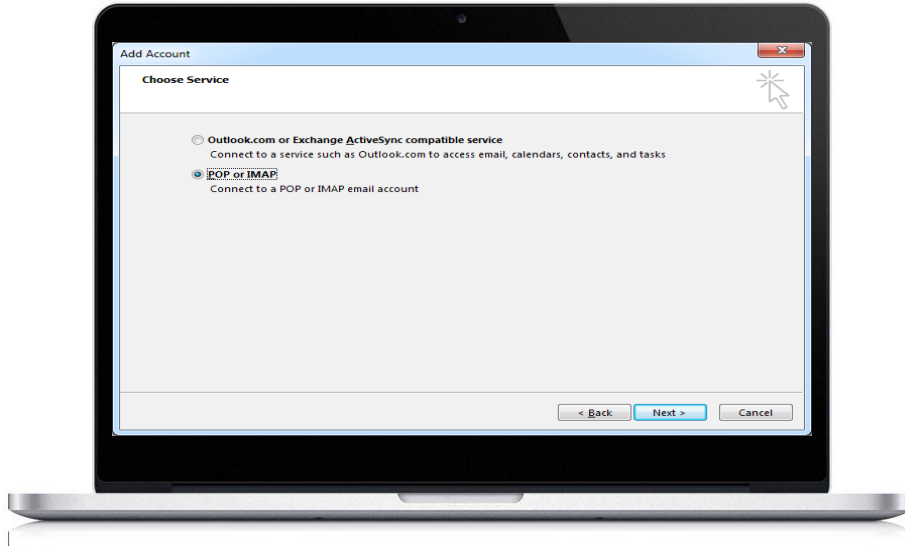


Step 3 Start manual configuration

Select « Manual setup or additional server types ».

Click « Next »

Microsoft Outlook email account Configuration guide (POP)

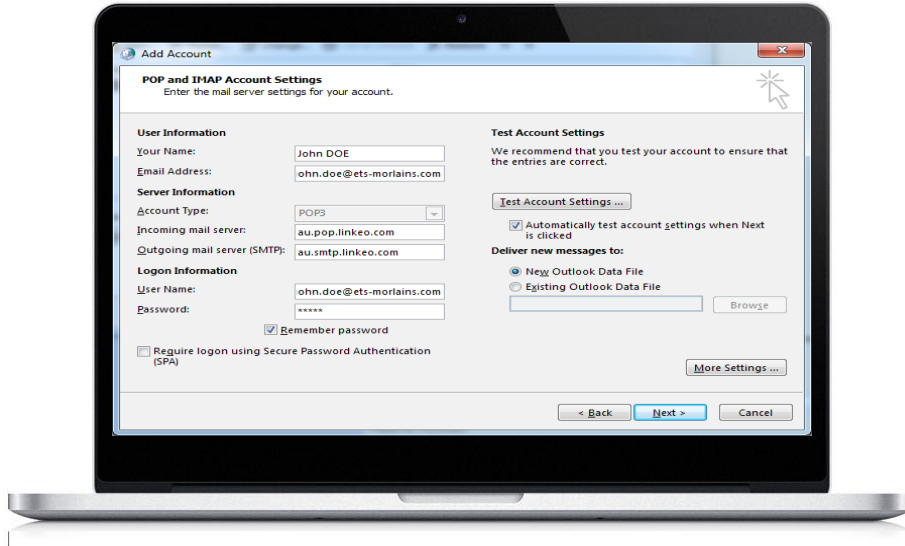


Step 4 Choose the service

Select « POP or IMAP »

Click « Next »

Microsoft Outlook email account Configuration guide (POP)



Step 5 User and server information

Enter your name: it is the name that will be displayed with you email address

Enter your email address: the one Linkeo created for you

Enter the server information (see next page)

Microsoft Outlook email account Configuration guide (POP)

In Server Information:

Select POP3, if you want to configure your email in POP

Incoming server

If you are in FRANCE: fr.pop.linkeo.com

If you are in AUSTRALIA: au.pop.linkeo.com

If you are in CANADA: ca.pop.linkeo.com

If you are in the United States: us.pop.linkeo.com

Outgoing server

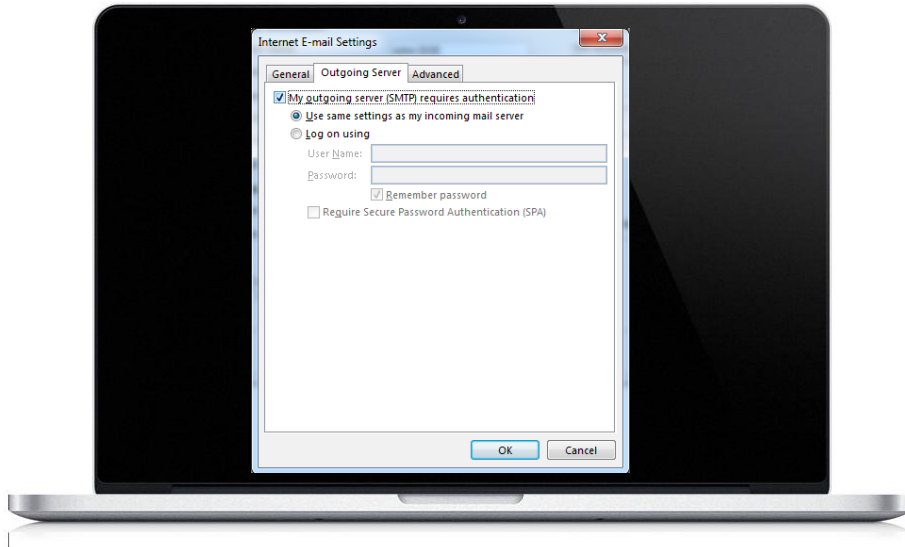
If you are in FRANCE: fr.smtp.linkeo.com

If you are in AUSTRALIA: au.smtp.linkeo.com

If you are in CANADA: ca.smtp.linkeo.com

If you are in the United States: us.smtp.linkeo.com

Microsoft Outlook email account Configuration guide (POP)



Step 6 Outgoing server tab

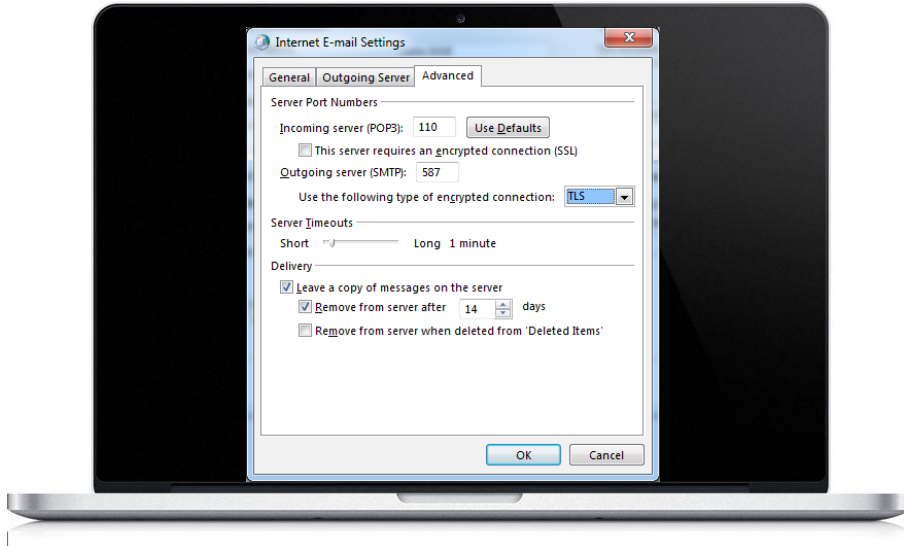
Click « More Settings »

In the « Outgoing Server » tab, select « My outgoing server (SMTP) requires authentication »

Click on « Use same settings as my incoming mail server »

Click « OK »

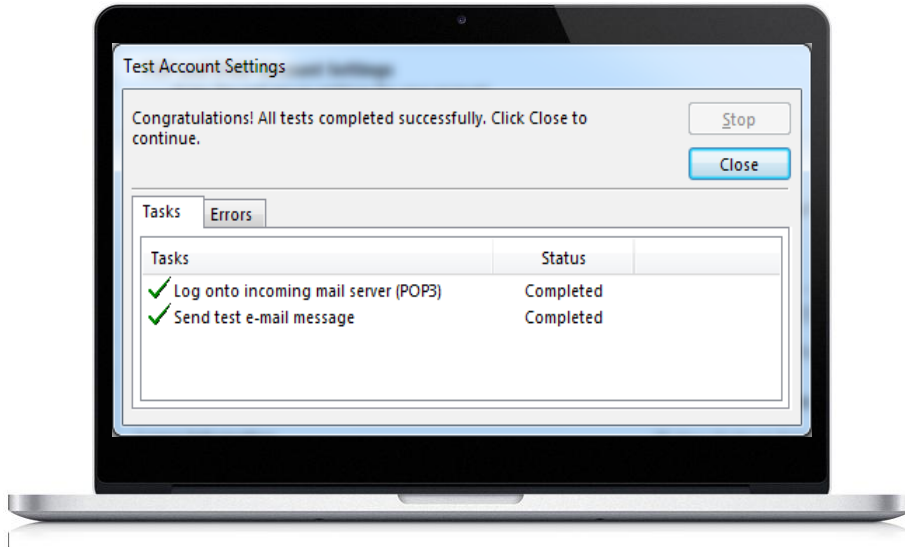
Microsoft Outlook email account Configuration guide (POP)



Step 7 Advanced tab

Click on the « Advanced » tab. Check the boxes: « This server requires an encrypted connection (SSL) ».
For the « Incoming server » field, enter: 110
For the « Use the encrypted connection » field, enter: TLS
For the « Outgoing server » field, enter: 587
Click Ok

Microsoft Outlook email account Configuration guide (POP)



Step 7 Test and validate

Click « Test account settings... »

If there are no errors, click « Next » to complete the configuration

Congratulations!

You have correctly configured your email account for Microsoft Outlook 10/13

